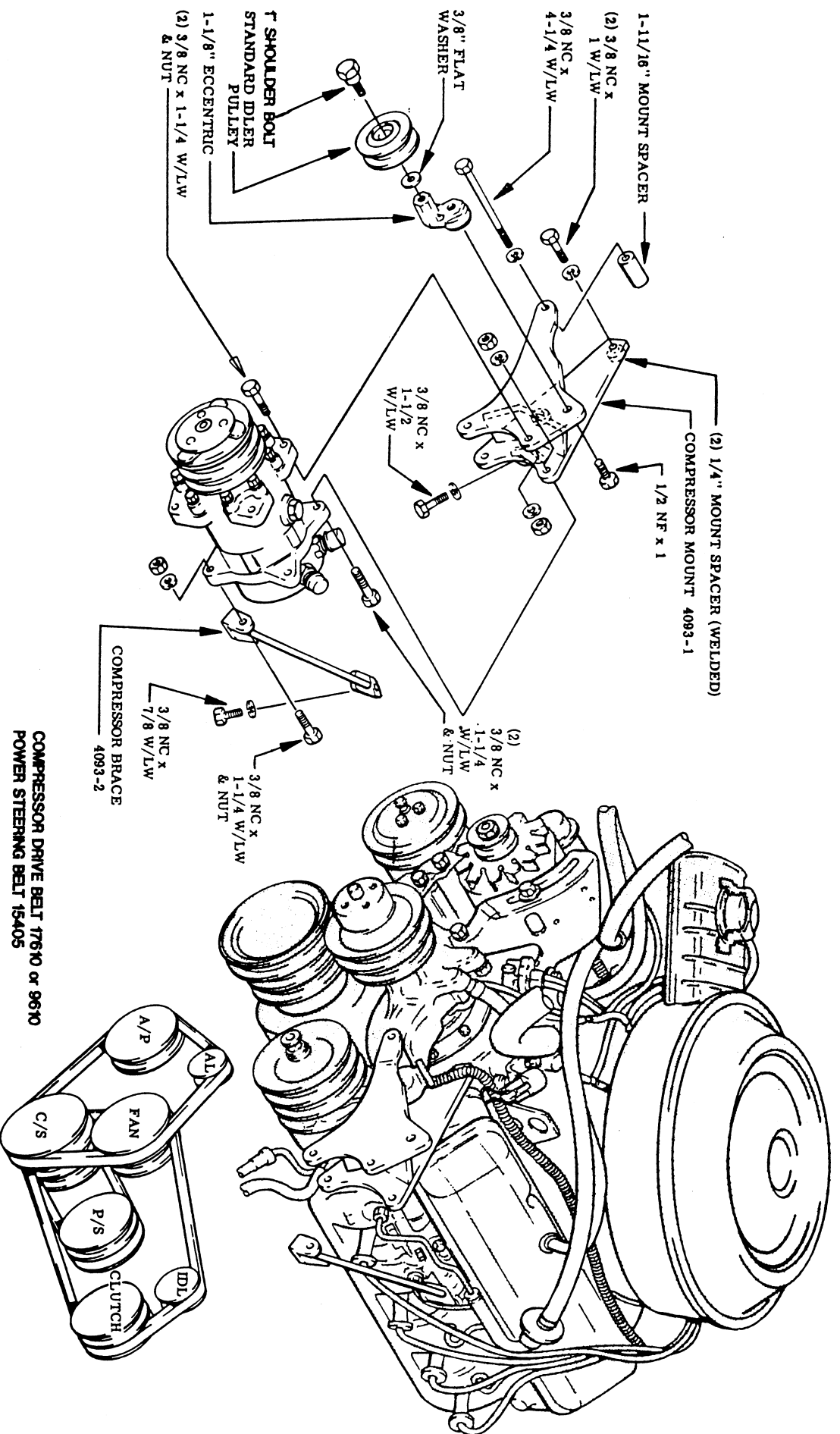


**454 CUBIC INCH
WITH OR WITHOUT AIR PUMP
WITH OR WITHOUT POWER STEERING**

COMPRESSOR DRIVE BELT T7610 or 9610
POWER STEERING BELT 15405



1987
12-29-95

PACKING LIST 4093

1	4093-1 Compressor Mount	5	3/8" NC x 1 1/4" Bolts
1	4093-2 Compressor Brace	1	3/8" NC x 4 1/4" Bolt
1	Standard Idler Pulley	1	3/8" NC x 1 1/2" Bolt
1	1" Shoulder Bolt	1	1/2" NF x 1" Bolt
1	1 1/8" Eccentric	10	3/8" Lockwashers
1	3/8" Flatwashers	5	3/8" NC Nuts
1	1 11/16" Mount Spacer	1	17610 Belt or 9610
1	3/8" NC x 7/8" Bolt	1	15405 Alternator Belt
2	3/8" NC x 1" Bolts		

INSTALLATION INSTRUCTIONS

Use Sanden 508 or Seltec TM-15, or TM-13HD Compressor
With 5.25" Double A Groove Clutch

1. Disconnect battery.
2. Remove alternator belt, lay aside for later installation. Remove and discard power steering belt, if equipped.
3. Using mount and schematic as a guide, remove bolts from engine. Hold mount in approximate position, this will help identify bolts to remove.
4. Loosely install compressor mount using hardware noted on schematic.
5. Loosely install compressor to mount using hardware noted on schematic.
6. Loosely install compressor brace to engine and compressor using hardware noted.
7. Tighten all mount, compressor and brace bolts uniformly and securely.
8. Loosely install idler assembly using (1) 1 1/8" eccentric, (1) 1" shoulder bolt, (1) 3/8" flatwasher and (1) 1/2" NF x 1" bolt.
9. Wrap power steering belt (15405) around crankshaft pulley and power steering pump pulley.
10. Wrap compressor belt (17610) around crankshaft pulley, water pump pulley, idler pulley and clutch.
11. Adjust power steering pump belt to proper tension and tighten all bolts securely.
12. Adjust compressor drive belt to proper tension with idler assembly and tighten securely.
13. Replace OEM alternator belt. Adjust to proper tension and tighten all bolts securely.
14. Connect battery.

CAUTION: BEFORE RELEASING VEHICLE TO CUSTOMER - Check all Radiator Hoses, Heater Hoses and Oil Lines to be sure there is proper clearance of Compressor, Compressor Mount and Compressor Clutch.